

# BRAC Experience on Artificial Insemination Activities

**Presented by:**

**A. Q. M. Shafiqur Rouf**  
Senior Manager  
BRAC AI Programme  
BRAC Agro and Salt Industry

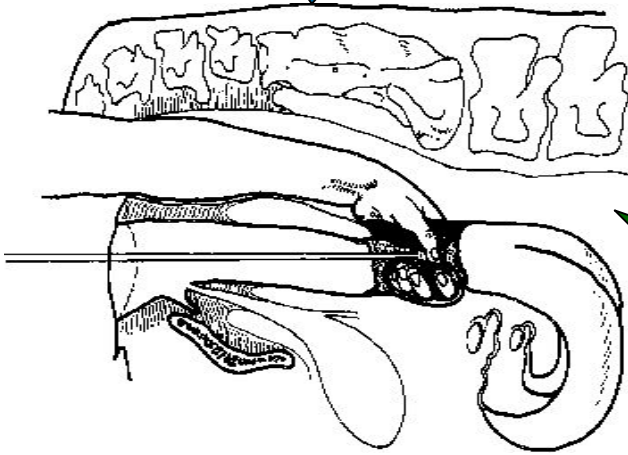
# EARLY HISTORY

- **BRAC started AI Programme in 1984, Collaboration with Government**
- **In that time 133 workers were trained by CCBS Savar and they used liquid semen**
- **After the certain period of time in the year of 1998 BRAC started AI program with frozen semen and established a bull station in Shambhugonj, Mymensingh**

**BRAC Trained**

**Bangladesh Agricultural  
University**

**1515 AI workers**



**Bangladesh Agricultural  
University**

**Train additional 500 AI  
workers within this year**

## Present Scenario of Frozen semen production and AI coverage In Bangladesh by BRAC

Year	Production*(Doses)	Nos of Animal Inseminated	Progeny born upto Dec, 2008 (Nos)
Upto Dec, 2008	18,84,379	17,96,818	801889*

\* Progeny born: out of 1330495 Animal inseminated upto Feb, 2008

## Future Insemination target and Market share

Year	Insemination target (No. of animal)	Market share (%) of total Breedable animal
2009	800000	13.33
2010	1200000	20
2011	1600000	26.67
2012	2000000	33.33

## BRAC'S EXPERIENCES

- Production of breeding bull is difficult task due to the unavailability of appropriate genetic resources and availability of funds
- There is no service centre for repairing cryogenic container in Bangladesh
- Machineries, chemicals, spares and ingredients (inputs) used in Bull Station are very costly so that the production cost becomes high
- Repairing of machineries is not possible in this country; that may affect the production of frozen semen
- Source of Liquid Nitrogen (LN<sub>2</sub>) is limited and cost of LN<sub>2</sub> is very high
- Price of Liquid Nitrogen container is very high
- Non authorized agencies are involved in AI service which affects the national livestock policy
- Govt. FA (AI)'s are involved in selling govt. semen to BRAC AI worker at reduced price which causes the interruption of BRAC activity



**CONTD.**

- **Demarcation of area/union may restrict a good number of farmers to receive good AI service from the same organization involved**
- **Natural service centre creates interference to execute the policy and develop dairy genetics**
- **Proper breeding strategy and mating plan are not implementing properly due to the lack of knowledge on breeding and proper supervision and monitoring by other unauthorized agencies involved which is affecting BRAC and Government activities**
- **Controlling of cattle breeding policy is not properly executed by the specific breeding committee comprises of technical personnel of Government and other reputed organization**
- **Inter agencies co-operation in the field level needs to be more effective**
- **Latest Government approved common AI training module and syllabus should be followed by every organization involved otherwise it may affect the performance of AI activities in this country**

# WHAT SHOULD BE DONE:

- **Reduce Tax and VAT for importation of AI materials**
- **Mass media advertisement on AI activities by the Government**
- **Proper AI experts are to be placed in right position**
- **Breeding of Red Ctg cattle may be expanded in all over the country**
- **Establishment of semen distribution depot near to the AI worker to ensure doorstep service i.e., make open market for all agencies with strong monitoring**
- **Cattle feed distribution should be properly executed**
- **Encourage Private Entrepreneur for establishing LN<sub>2</sub> plant**
- **Govt. Should encourage to NGOs for Bull Production Station establishment**






## **BRAC EXPERIENCES ON FODDER PRODUCTION ACTIVITY:**

**By:**

**M. A. Latif**

**Quality Controller, BRAC AI Programme**

**BRAC, Bangladesh**

-  **Three days training on fodder production was provided to 4280 nos beneficiaries in 164 upazilas in 2008**
-  **About 16400 no. cow rearers trained by BRAC in the year of 2008**
-  **Fodder cuttings were collected from TLO Office. But supply is limited**
-  **Credit supports are given by BRAC to cattle rearers**
-  **Technical support and followup are given by the technical team**

THANKS

TO

ALL

THANKS  
TO